

Planning and Designing – eg. Designs for a Landscape Painting

Considerations:

What is the brief? (a design for a landscape painting, based on own photos and research; clear use of perspective, a wide variety of features in the landscape)

How can you make it interesting/ high quality? After your initial design drawings:

1. What have you done well?
2. What needs to be improved?
3. Where can you find resource images to help you make your drawings more accurate? (Photos, internet, magazines, other artworks etc)

Remember the 'which is better' exercise below? When designing, you need to be able to make the same **judgement** about your own work.

Eg. Which of your two initial drawings should you develop to turn into a Final Piece painting?



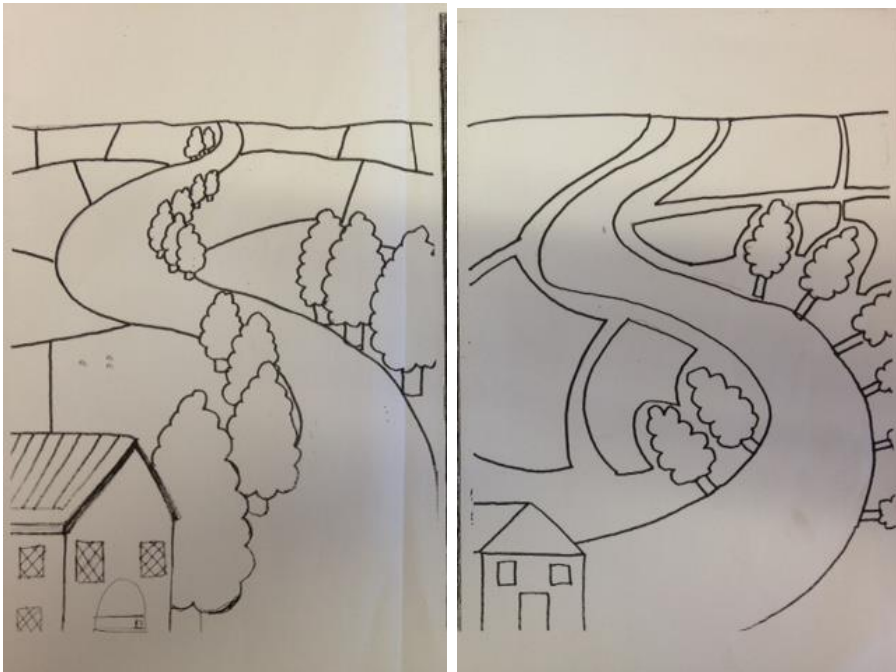
Use **success criteria** to help you **choose one design**.

Success Criteria

- *Perspective is clear*
- *Drawings are high-quality & accurate*
- *Original, creative composition*

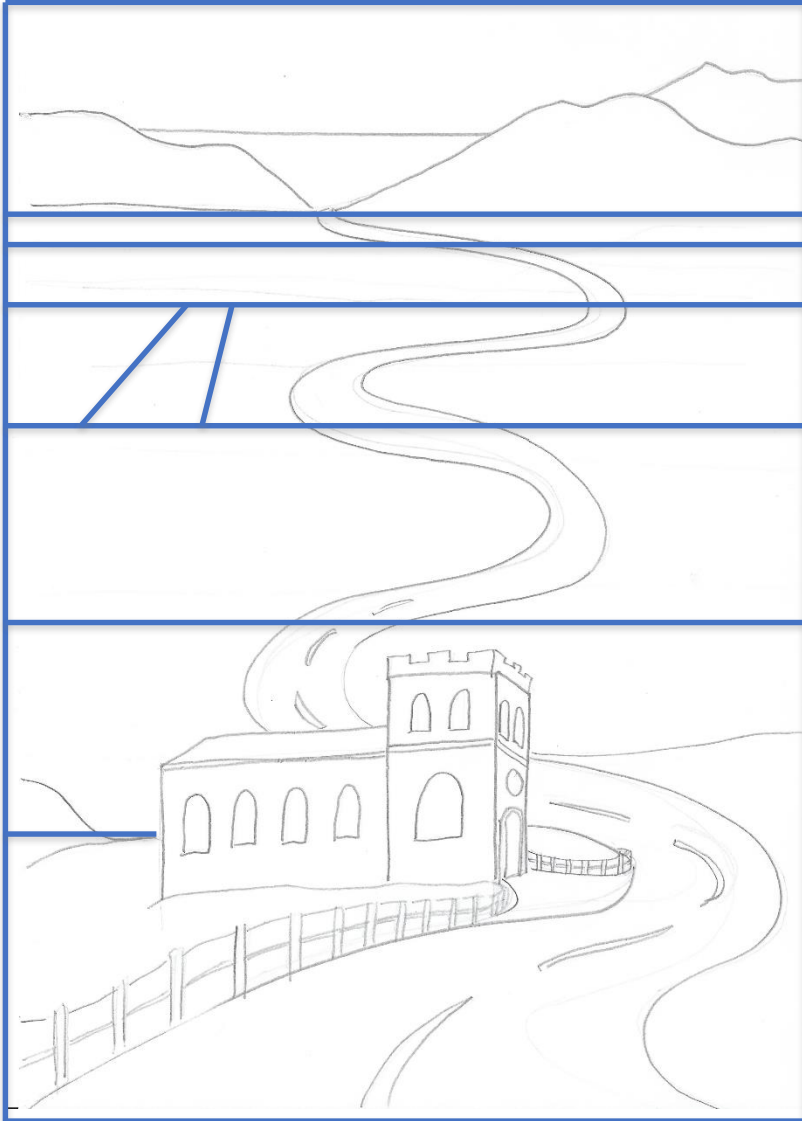
WAYS TO IMPROVE YOUR PIECE:

- Add smaller things in the background
- Add more detail - look at photos to help you draw accurately



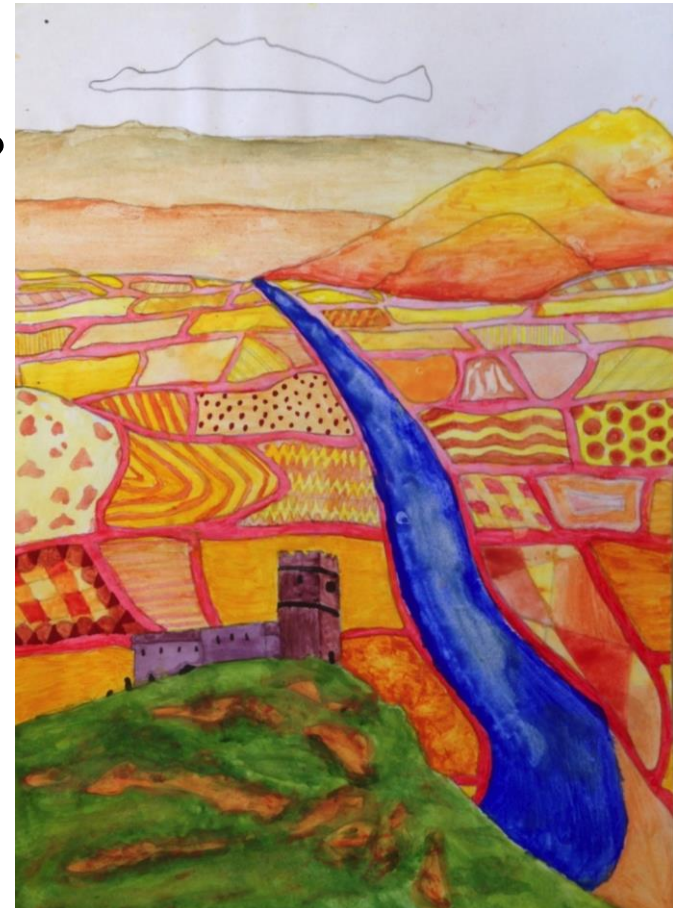
Finalising Landscape design

- Breaking the midground into shapes



EXAMPLE: Add fields by drawing **diagonal lines** between the *horizontal* ones to help you break up the midground (as seen here).

What else can you add?



Look at other landscapes
for ideas to add to your
design:

*Eg. clouds, sun,
snowcapped mountains,
volcano, forests.....*

What else can you see?

