



# AI and Assessments: **A quick guide for students**



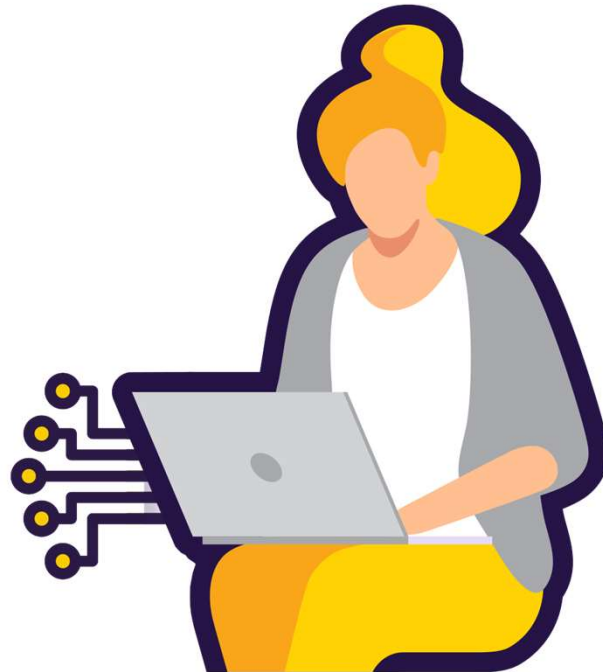
# What is AI?

- AI stands for artificial intelligence and using it is like having a computer that thinks
- AI tools like ChatGPT or Snapchat My AI can write text, make art and create music by learning from data from the internet, but watch out – they can also make things up and be biased



## How can AI be misused in assessments?

AI misuse is when you take something made using AI and say it's your own work.



**THIS IS  
CHEATING!**

# How do I make sure I don't misuse AI?

- 1 Know the rules
- 2 Reference reference reference!
- 3 Declare it's all your own work





## Know the rules!

- You're not allowed to use AI tools when you're in an exam
- Your teachers will tell you if you're allowed to use AI tools when doing your coursework – the rules will depend on your qualification
- Even if you're allowed to use AI tools, you can't get marks for content just produced by AI – your marks come from showing your own understanding and producing your own work



## 2

## Reference reference reference!

If you're allowed to use AI tools, you must reference them clearly

- Name the AI tool you used
- Add the date you generated the content
- Explain how you used it
- Save a screenshot of the questions you asked and the answers you got



# 3

## Declare it's all your own work

- When you hand in your assessment, you have to sign a declaration
- Anything without a reference must be all your own work
- If you've used an AI tool, don't sign the declaration until you're sure you've added all the references



## What happens if I misuse AI?

If you've misused AI, you could lose your marks for the assessment – you could even be disqualified from the subject.

**DON'T RISK IT!**







# **REMEMBER**

**Misusing AI is cheating!**

Know the rules

Talk to your teachers

Reference clearly